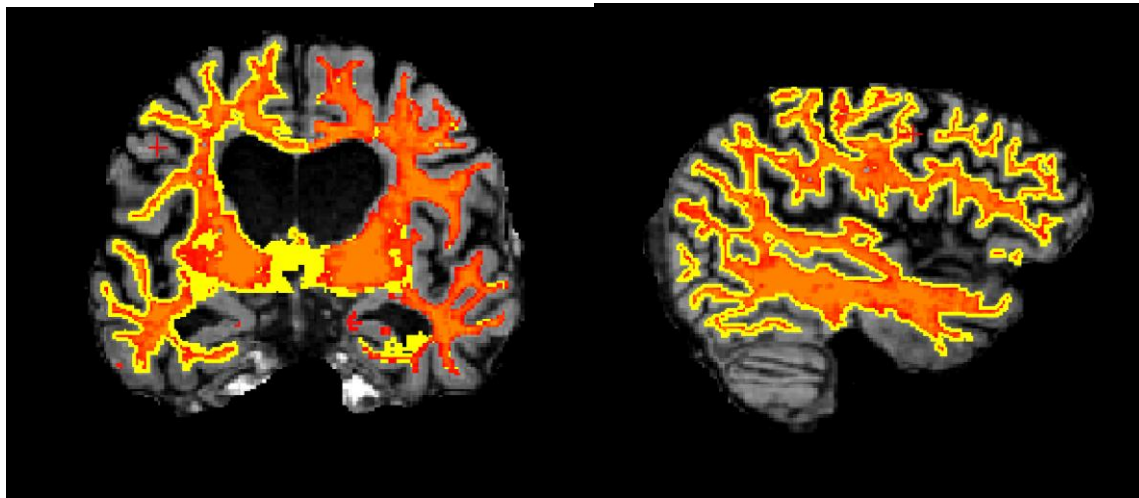
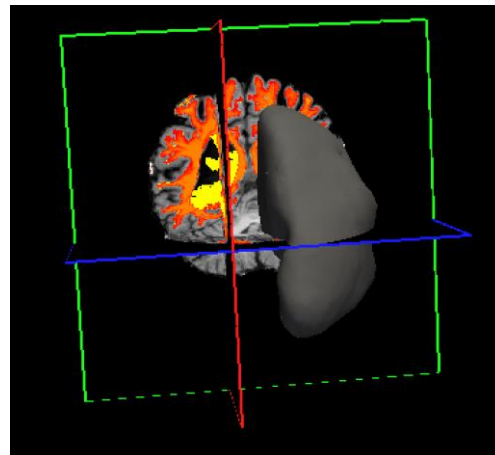
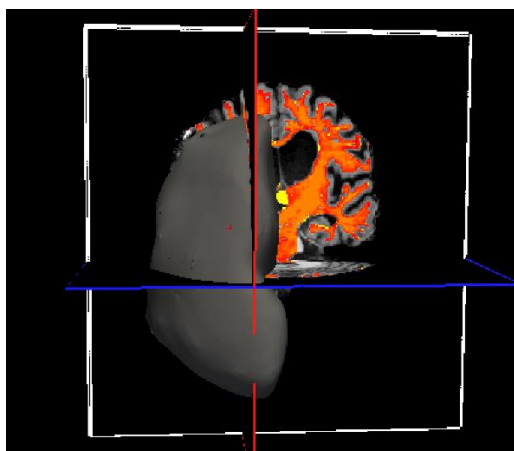
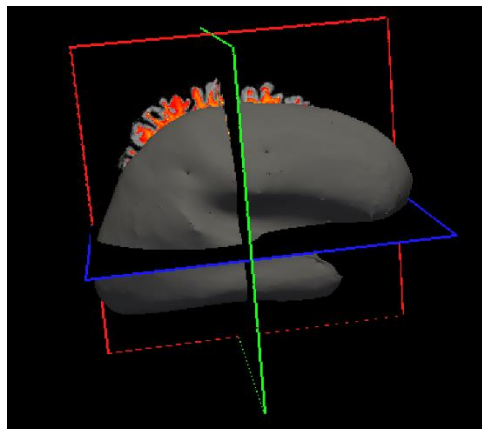
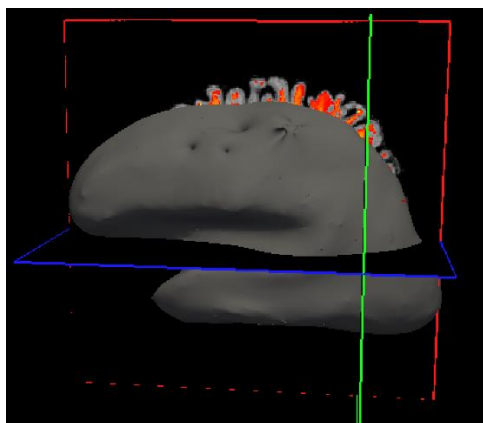


SUBJ with trouble: coronal and sagittal view of the parietal lobe: looks fine.



3D of lh.inflated.nofix and rh.inflated.nofix: clearly you can see a mismatch of the inflated with the brainmask and wm.mgz



After it generated lh.defects and it stopped processing lh.smoothwm and never got a chance to generate rh.defects.

SUBJ without trouble: surf/inflated.nofix almost match with the wm.mgz and brainmask

